

Deep Cycle SLA Battery

**DC SERIES**

DC (Deep cycle) Series batteries are designed for deep discharge application, with special chemical formula for plates active paste material, slightly stronger electrolyte and low temperature design, which can withstand repeated deep cyclic application, such as Solar Energy System, Golf Trolley, Electric

**Application**

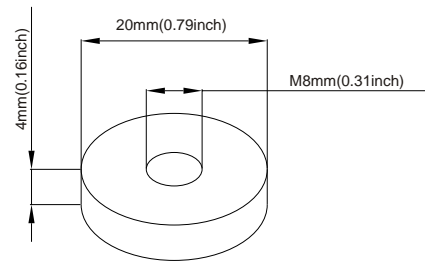
- Solar Energy System
- Golf Cars and Buggies
- Electric Powered Vehicles
- Wheel Chairs
- Power Tools
- Electric Powered Toys
- Control System
- Vacuum Cleaners
- Medical Equipments
- UPS

**General Features**

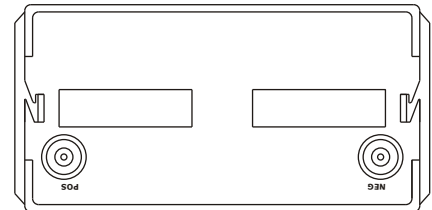
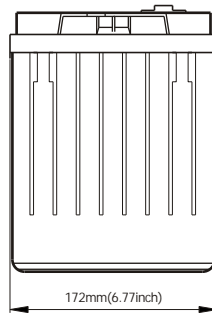
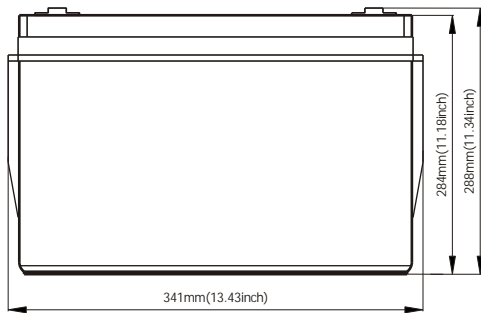
- Sealed and maintenance free operation.
- Non-Spillable construction design.
- ABS containers and covers(UL94HB, UL94V-0) optional.
- Safety valve installation for explosion proof.
- High quality and high reliability.
- Exceptional deep discharge recovery performance.
- Low self discharge characteristic.
- Flexibility design for multiple install positions.

**Construction**

- Component .....Raw material
- Positive .....Lead dioxide
- Negative .....Lead
- Container .....ABS
- Cover .....ABS
- Sealant .....Epoxy Resin
- Safety valve ....EPDR
- Terminal .....Copper
- Separator .....Fibre glass
- Electrolyte .....Sulfuric acid

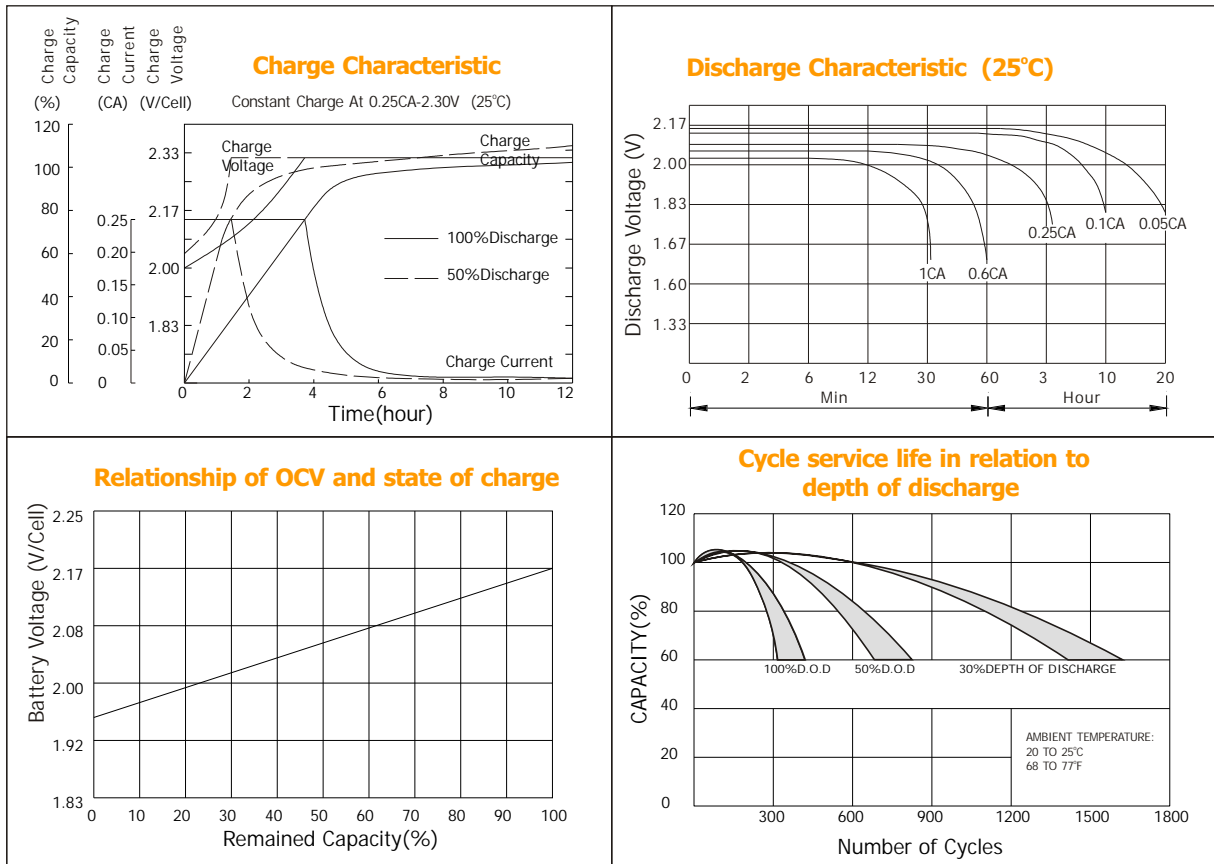


**Terminal Dimensions**



Battery Model	DC 12-135			
Designed Cycle Life	> 350 cycles @ -0.5CA to 9.6V			
Capacity(25°C)	20HR(6.8A,1.75V)	10HR(13.5A,1.75V)	5HR(22.94A,1.75V)	1HR(87.7A,1.75V)
	136AH	135AH	114.7AH	87.7AH
Dimensions	Length	Width	Height	Total Height
	341mm(13.43inch)	172mm(6.77inch)	284mm(11.18inch)	288mm(11.34inch)
Approx. Weight	44Kg (97.02lbs)			
Internal Resistance	Full charged at 25°C: 0.0045 Ohm			
Self Discharge	3% of capacity declined per month at (25°C)			
Capacity Affected by Temp.(20HR)	40°C	25°C	0°C	-15°C
	102%	100%	85%	65%
Charge Voltage(25°C)	Cycle use		Float use	
	14.4-15V(-30mV/ °C), max. Current: 34A		13.6-13.8V(-20mV/ °C)	

Deep Cycle SLA Battery



Constant current discharge ratings-amperes at 25°C

F. V/Time	5MIN	10MIN	15MIN	30MIN	1HR	3HR	5HR	10HR	20HR
1.60V	592	368	278	169	97.5	42.8	26.2	14.3	7.70
1.67V	555	349	267	162	96.3	41.2	25.6	14.1	7.43
1.70V	509	337	261	147	93.3	38.4	25.1	14.1	7.32
1.75V	499	326	252	140	88.9	37.1	24.5	14.0	7.12
1.80V	446	311	229	130	83.3	35.7	23.1	13.7	6.93
1.85V	394	297	206	119	77.6	34.4	21.6	13.5	6.74

Constant power discharge ratings-watts at 25°C

F. V/Time	5MIN	10MIN	15MIN	30MIN	1HR	3HR	5HR	10HR	20HR
1.60V	1038	665	507	305	177	76.4	44.5	29.4	15.5
1.67V	1002	648	501	299	176	74.0	44.3	29.3	14.9
1.70V	943	642	496	280	173	70.7	43.7	29.1	14.7
1.75V	949	639	492	271	170	69.0	43.3	28.7	14.4
1.80V	868	630	456	259	160	67.0	42.0	28.3	14.0
1.85V	788	598	414	242	150	65.0	40.6	28.0	13.4

