



#### SL Series

BOSFA POWER SL(Long Service Life)Series batteries utilizes thick grids of modern technology are adopted so as to guarantee the design life up to 12 years. Advanced micro porous absorbed glass matt separator - minimizes diffusion of oxygen into the separator, reducing float charge current which suppressed the corrosion rate of the positive grid and extends the life of the battery.

#### Application

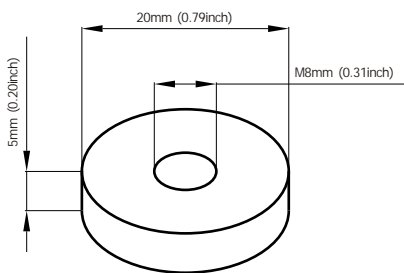
- Cable Television
- Communication Equipment
- Security System
- UPS
- Control Equipment
- Medical Equipment
- Emergency Power System

#### General Features

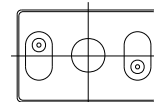
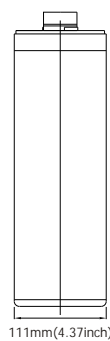
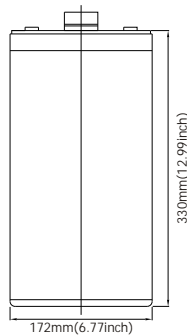
- Extra long life service design (up to 15 years) for 2V models.
- Non-Spillable construction design.
- ABS containers and covers(UL94HB, UL94V-0) optional.
- Safety valve installation for explosion proof.
- Higher safety & reliable construction.
- Exceptional deep discharge recovery performance.
- Low self discharge characteristic.
- Flexibility design for multiple install positions.

#### Construction

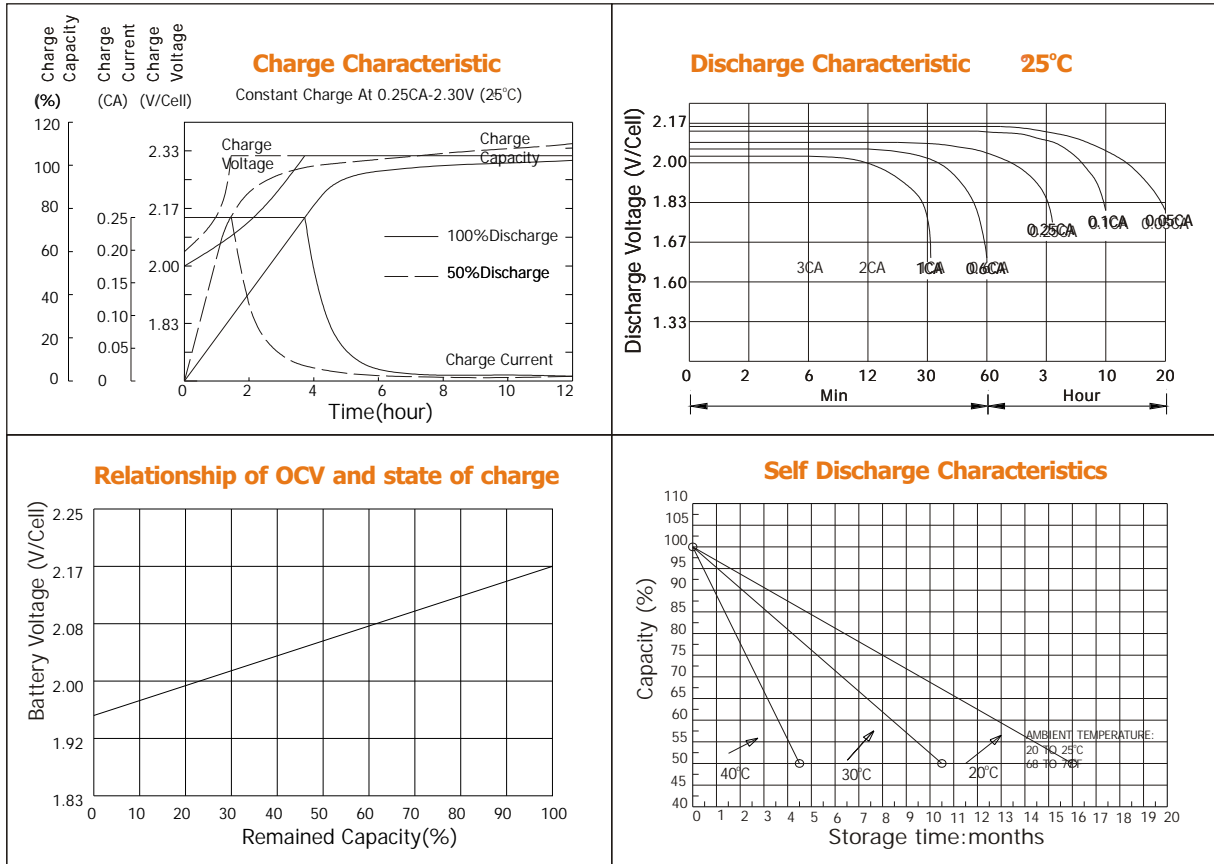
- Component .....Raw material
- Positive .....Lead dioxide
- Negative .....Lead
- Container .....ABS
- Cover .....ABS
- Sealant .....Epoxy Resin
- Safety valve .....EPDR
- Terminal .....Copper
- Separator .....Fiber glass
- Electrolyte .....Sulfuric acid



**Terminal Dimensions**



Battery Model	SL 2-200			
Designed Floating Life	15 Years			
Capacity(25°C)	20HR(10.5A,1.75V)	10HR(20A,1.75V)	5HR(36.3A,1.75V)	1HR(134A,1.75V)
	210AH	200AH	181.5AH	134AH
Dimensions	Length	Width	Height	Total Height
	172mm(6.77inch)	111mm(4.37inch)	330mm(13.0inch)	365mm(14.37inch)
Approx. Weight	14.3Kg (31.5 lbs)			
Internal Resistance	Full charged at 25°C: 0.0008 Ohm			
Self Discharge	3% of capacity declined per month at (25°C)			
Capacity Affected by Temp.(20HR)	40°C	25°C	0°C	-15°C
	102%	100%	85%	65%
Charge Voltage(25°C)	Cycle use		Float use	
	2.3V-2.35V(-5mV/ °C), max. Current: 50A		2.25-2.27V(-3.3mV/ °C)	



#### Constant current discharge ratings-amperes at 25°C

F. V/Time	5MIN	10MIN	15MIN	30MIN	1HR	3HR	5HR	10HR	20HR
1.60V	540	420	340	218	138	63.0	41.0	21.2	11.0
1.67V	480	388	320	212	136	61.0	39.0	21.2	11.0
1.70V	440	360	300	202	130	58.0	37.0	21.0	11.0
1.75V	405	333	284	196	127	54.7	36.8	20.9	10.9
1.80V	358	304	260	189	120	54.2	35.6	20.0	10.7
1.85V	264	236	213	154	99	50.0	32.8	18.9	10.5

#### Constant power discharge ratings-watts at 25°C

F. V/Time	5MIN	10MIN	15MIN	30MIN	1HR	3HR	5HR	10HR	20HR
1.60V	755	568	515	392	245	106	78.0	42.9	21.5
1.67V	712	535	487	372	235	104	76.6	42.1	21.1
1.70V	668	502	458	352	224	101	75.1	41.3	20.7
1.75V	624	469	430	332	213	98.0	73.5	40.4	20.2
1.80V	580	436	402	311	201	94.7	71.7	39.5	20.0
1.85V	536	403	374	290	187	91.4	70.0	38.6	19.8



#### BOSFA INDUSTRIAL BATTERY CO., Ltd.

5/F, Nanyou Building, No.16, Tianhe Road, Yuexiu District, Guangzhou, the PRC 510075  
 Tel: (+86-20)38320842 Fax: (+86-20)38320841  
 Website: www.bosfabattery.com E-mail: sales@bosfabattery.com