

General Series SLA Battery

**General Series**

General Series Valve Regulated Lead Acid batteries are designed with AGM (Absorbent Glass Mat) technology, high performance plates and electrolyte to gain extra power output for common power backup system applications widely used in the field of UPS, Emergency Lighting System.

**Application**

- Alarm System
- Cable Television
- Communication Equipment
- Control Equipment
- Security System
- Medical Equipment
- UPS
- Power tools
- Emergency Power System
- Toys

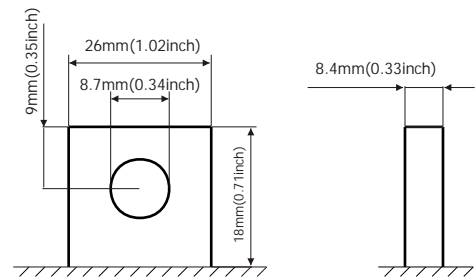


**General Features**

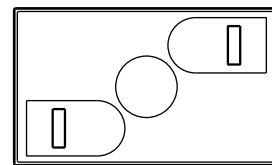
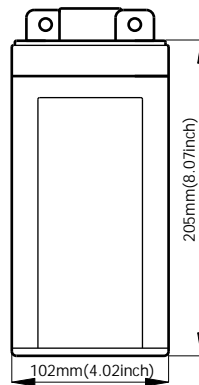
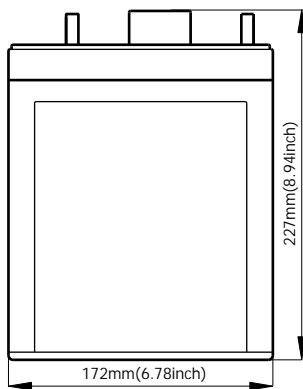
- Sealed and maintenance free operation.
- Non-Spillable construction design.
- ABS containers and covers(UL94HB, UL94V-0) optional.
- Safety valve installation for explosion proof.
- High quality and high reliability.
- Exceptional deep discharge recovery performance.
- Low self discharge characteristic.
- Flexibility design for multiple install positions.

**Construction**

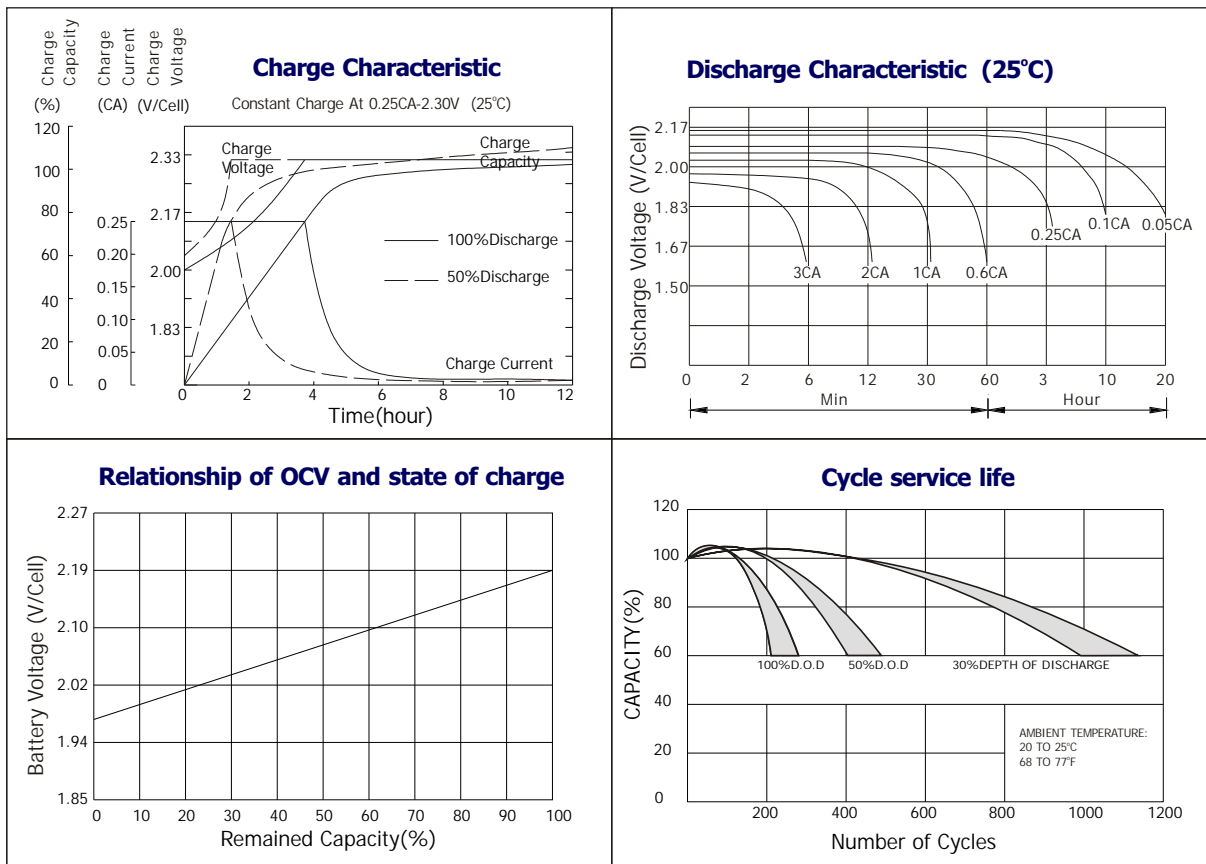
- Component .....Raw material
- Positive .....Lead dioxide
- Negative .....Lead
- Container .....ABS
- Cover .....ABS
- Sealant .....Epoxy Resin
- Safety valve .....EPDR
- Terminal .....Copper
- Separator .....Fiber glass
- Electrolyte .....Sulfuric acid



**Terminal Dimensions**



Battery Model	GB2-120			
Designed Floating Life	8 Years			
Capacity(25°C)	20HR(6.1A,1.75V)	10HR(12A,1.75V)	5HR(20.4A,1.75V)	1HR(78A,1.75V)
	122AH	120AH	102AH	78AH
Dimensions	Length	Width	Height	Total Height
	172mm(6.77inch)	102mm(4.02inch)	205mm(8.07inch)	227mm(8.94inch)
Approx. Weight	7.1Kg (15.66 lbs)			
Internal Resistance	Full charged at 25°C :0.0008 Ohm			
Self Discharge	3% of capacity declined per month at (25°C)			
Capacity Affected by Temp.(20HR)	40°C	25°C	0°C	-15°C
	102%	100%	85%	65%
Charge Voltage(25°C)	Cycle use		Float use	
	2.4-2.46V(-5mV/ °C), max. Current: 30A		2.26-2.30(-3mV/ °C)	



**Constant current discharge ratings-amperes at 25°C**

F. V/Time	5MIN	10MIN	15MIN	30MIN	1HR	3HR	5HR	10HR	20HR
1.60V	469	292	220	134	85.3	37.4	22.9	12.8	6.73
1.67V	440	277	212	128	84.2	36.0	22.4	12.7	6.50
1.70V	403	267	207	117	81.6	33.6	21.9	12.6	6.40
1.75V	395	258	200	111	77.8	32.5	21.4	12.5	6.23
1.80V	354	247	182	103	72.8	31.2	20.2	12.3	6.06
1.85V	312	235	163	95	67.8	30.1	18.9	12.1	5.89

**Constant power discharge ratings-watts at 25°C**

F. V/Time	5MIN	10MIN	15MIN	30MIN	1HR	3HR	5HR	10HR	20HR
1.60V	685	439	335	201	128	55.3	32.2	21.3	11.2
1.67V	661	428	331	197	127	53.6	32.1	21.2	10.8
1.70V	623	424	328	185	125	51.2	31.7	21.1	10.7
1.75V	627	422	325	179	123	50.0	31.4	20.8	10.4
1.80V	573	416	301	171	116	48.5	30.4	20.5	10.1
1.85V	520	395	273	160	109	47.1	29.4	20.3	9.7



COPYRIGHT BOSFA INDUSTRIAL BATTERY CO.,LTD.